

LED Lamps & Light Fixtures



OLYMPIA LIGHTING



About Us

Application Specific Designs in the USA
Complimented by Competitive Manufacturing !

Design, Manufacturing & Sales of LED Lighting alternatives to HID Lamps

Olympia Lighting, Inc. Designs, Manufactures and Sells Industrial Grade Energy Efficient LED Lighting alternatives to High Intensity Discharge (HID) Lamp & Fixtures, including Metal Halide, High Pressure Sodium & Mercury Vapor Lamps, Fluorescent Lamps & Tubes.

Headquartered in NJ, USA. Warehousing & Sales Facilities in NJ and CA

Headquartered in the USA with Warehousing & Sales Facilities in NJ and CA, and a network of Sales & Marketing Reps across the USA. Our Engineering and Market driven Designs are complimented by our competent Manufacturing Facilities.

ISO-9000:2008 Certified Quality System, Complies with UL & CSA, CE & DLC

The Quality System is ISO-9000:2008 Certified and complies with UL & CSA Safety Standards for USA and Canada, and CE (EMC & LVD) for Europe. Our products are RoHS and FCC compliant and performs to Design Light Consortium (DLC) standards.

Manufacturing complies with GMP, Labor & Environmental Requirements

Our Manufacturing complies with the Good Manufacturing Practice (GMP) requirements and with local labor laws and environmental requirements.

Olympia Lighting Specializes in Cost Effective LED Replacement of HID Lamps for Commercial, Industrial, Street and Area Lighting

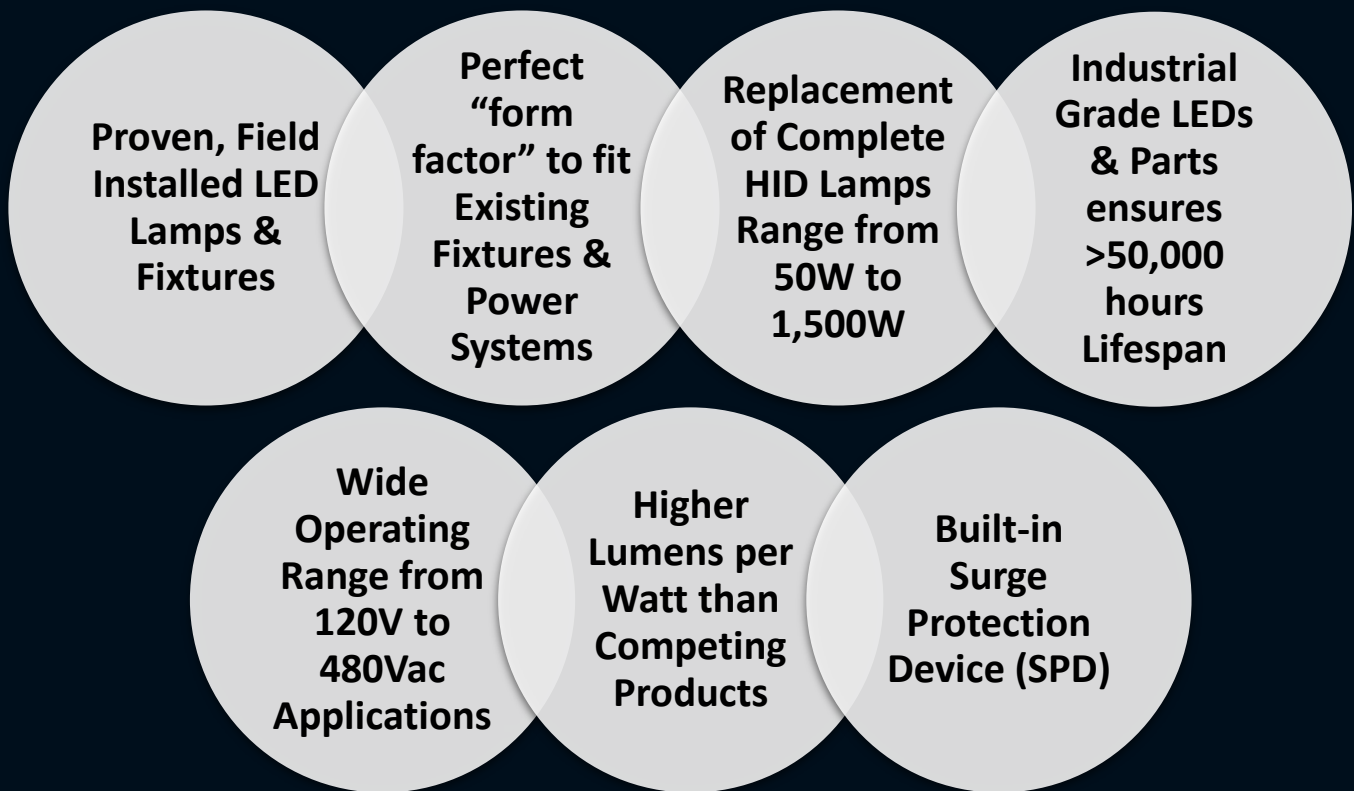




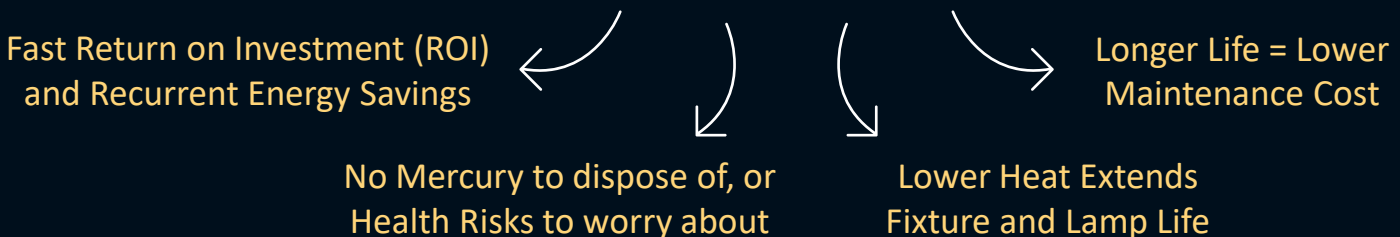
Features & Benefits

Advanced LED Lamp Technology for Commercial, Industrial, Street & Area Lighting Applications !

The Competitive Edge:



Our LED Lighting Benefits:





Smart LED Lighting

Certificates

Stringent Quality Standards !

Compliance with UL & CSA, FCC requirements, and CE for Europe

CE / EMC CERTIFICATE
Cluster LED Bulbs

CE / LVD CERTIFICATE
Cluster LED Bulbs



FCC VERIFICATION
Cluster LED Bulbs



FCC VERIFICATION
High-Bay LED Lamps





Safety Certification

UL 1598C & CSA TIL B-79A (Canada)

UL 1993 & CSA 1993 (Canada)

Intertek **AUTHORIZATION TO MARK**

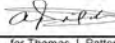
This authorizes the application of the Certification Mark(s) shown below to the models described in the Product(s) Covered section when made in accordance with the conditions set forth in the Certification Agreement and Listing Report. This authorization also applies to multiple listee model(s) identified on the correlation page of the Listing Report.


This document is the property of Intertek Testing Services and is not transferable. The certification mark(s) may be applied only at the location of the Party Authorized To Apply Mark.

Applicant: OLYMPIA LIGHTING INC.
Address: 50 Delford Ave., Bergenfield, NJ 07621
Country: USA
Contact: Ram Shalvi / Judy Shalvi (201) 812 7880
Phone: (201) 812 7880
FAX: (201) 367 3858
Email: RShalvi@Olympic-Lighting.com

Manufacturer: OLYMPIC ELECTRONICS LTD.
Address: JiMa Di Industrial Park, LuoYang - BuLuo, HuiZhou City, GuangDong 516100
Country: China
Contact: Ram Shalvi / Mao Ping Yang (201) 812 7880
Phone: (201) 812 7880
FAX: (201) 367 3858
Email: RShalvi@Olympic-Lighting.com

Party Authorized To Apply Mark: Same as Manufacturer
Report Issuing Office: Cortland, NY

Control Number: 5001359 **Authorized by:**  for Thomas J. Patterson, Certification Manager

ETL CLASSIFIED


This document supersedes all previous Authorizations to Mark for the noted Report Number.

This Authorization to Mark is for the exclusive use of Intertek's Client and is provided pursuant to the Certification agreement between Intertek and its Client. Intertek's responsibility and liability are limited to the terms and conditions of the agreement. Intertek assumes no liability to any party, other than its Client in accordance with the agreement, for any loss, expense or damage occasioned by the use of this Authorization to Mark. Only the Client is authorized to permit copying or distribution of this Authorization to Mark and their only in its entirety. Use of Intertek's Certification mark is restricted to the conditions laid out in the agreement and in this Authorization to Mark. Any further use of the Intertek name for the sale or advertisement of the listed material, product or service must first be approved in writing by Intertek. Intertek Factory Assessments and Follow-up Services are for the purpose of ensuring appropriate usage of the Certification mark in accordance with the agreement, they are not for the purposes of production quality control and do not relieve the Client of their obligations in this respect.

Intertek Testing Services NA Inc.
 545 East Algonquin Road, Arlington Heights, IL 60005
 Telephone 800-345-3851 or 847-439-5667 Fax 312-283-1672

Standard(s): Standard for Light-Emitting Diode (Led) Retrofit Luminaire Conversion Kits (UL 1598C, First Edition, Dated January 16, 2014)
 Standard for Retrofitted luminaires and LED Retrofits Kits for installation into Previously Installed Luminaires; (CSA T.I.L. B-79A, Issued: January 15, 2015)

Product: LED Luminaire Retrofit Kit
Brand Name: OLYMPIA

Intertek **AUTHORIZATION TO MARK**

This authorizes the application of the Certification Mark(s) shown below to the models described in the Product(s) Covered section when made in accordance with the conditions set forth in the Certification Agreement and Listing Report. This authorization also applies to multiple listee model(s) identified on the correlation page of the Listing Report.

This document is the property of Intertek Testing Services and is not transferable. The certification mark(s) may be applied only at the location of the Party Authorized To Apply Mark.

Applicant: OLYMPIA LIGHTING INC.
Address: 50 Delford Ave., Bergenfield, NJ 07621
Country: USA
Contact: Ram Shalvi / Judy Shalvi (201) 812 7880
Phone: (201) 812 7880
FAX: (201) 367 3858
Email: RShalvi@Olympic-Lighting.com

Manufacturer: OLYMPIC ELECTRONICS LTD.
Address: JiMa Di Industrial Park, LuoYang - BuLuo, HuiZhou City, GuangDong 516100
Country: China
Contact: Ram Shalvi / Mao Ping Yang (201) 812 7880
Phone: (201) 812 7880
FAX: (201) 367 3858
Email: RShalvi@Olympic-Lighting.com

Party Authorized To Apply Mark: Same as Manufacturer
Report Issuing Office: Cortland, NY

Control Number: 5001359 **Authorized by:**  for Thomas J. Patterson, Certification Manager

ETL CLASSIFIED


This document supersedes all previous Authorizations to Mark for the noted Report Number.

This Authorization to Mark is for the exclusive use of Intertek's Client and is provided pursuant to the Certification agreement between Intertek and its Client. Intertek's responsibility and liability are limited to the terms and conditions of the agreement. Intertek assumes no liability to any party, other than its Client in accordance with the agreement, for any loss, expense or damage occasioned by the use of this Authorization to Mark. Only the Client is authorized to permit copying or distribution of this Authorization to Mark and their only in its entirety. Use of Intertek's Certification mark is restricted to the conditions laid out in the agreement and in this Authorization to Mark. Any further use of the Intertek name for the sale or advertisement of the listed material, product or service must first be approved in writing by Intertek. Intertek Factory Assessments and Follow-up Services are for the purpose of ensuring appropriate usage of the Certification mark in accordance with the agreement, they are not for the purposes of production quality control and do not relieve the Client of their obligations in this respect.

Intertek Testing Services NA Inc.
 545 East Algonquin Road, Arlington Heights, IL 60005
 Telephone 800-345-3851 or 847-439-5667 Fax 312-283-1672

Standard(s): Standard for Safety for Self-Ballasted Lamps and Lamp Adapters (UL 1993, Issued: 12/04/2012, Ed: 4) Self-Ballasted Lamps and Lamp Adapters (CSA C22.2#1993 Issued: 2012/12/04 Ed. 2).

Product: LED Self Ballast Lamp
Brand Name: OLYMPIA

UL ONLINE CERTIFICATIONS DIRECTORY Home Quick Guide Contact Us UL.com

Search results

You may choose to [Refine Your Search.](#)

Company Name	Category Name	Link to File
OLYMPIA LIGHTING INC	Lamps, Self-ballasted, Light-emitting-diode Type	OQV.R424058
OLYMPIA LIGHTING INC	Light-emitting-diode Luminaire Retrofit Kits	TZAR.E260159
OLYMPIA LIGHTING INC	Light-emitting-diode Recessed Luminaires	RZAO.E442509

Model number information is not published for all product categories. If you require information about a specific model number, please contact [Customer Service](#) for further assistance.

[Search Tips](#) [Print this page](#) [Terms of Use](#) [UL Family of Databases](#)

© 2017 UL LLC

UL ONLINE CERTIFICATIONS DIRECTORY Home Quick Guide Contact Us UL.com

Search results

You may choose to [Refine Your Search.](#)

Company Name	Category Name	Link to File
OLYMPIA LIGHTING INC	Light-emitting-diode Luminaire Retrofit Kits	TZAR.E260159

Model number information is not published for all product categories. If you require information about a specific model number, please contact [Customer Service](#) for further assistance.

[Search Tips](#) [Print this page](#) [Terms of Use](#) [UL Family of Databases](#)

© 2017 UL LLC

UL ONLINE CERTIFICATIONS DIRECTORY Home Quick Guide Contact Us UL.com

Search results

You may choose to [Refine Your Search.](#)

Company Name	Category Name	Link to File
OLYMPIA LIGHTING INC	Lamps, Self-ballasted, Light-emitting-diode Type	OQV.R424058

Model number information is not published for all product categories. If you require information about a specific model number, please contact [Customer Service](#) for further assistance.

[Search Tips](#) [Print this page](#) [Terms of Use](#) [UL Family of Databases](#)

© 2017 UL LLC

UL ONLINE CERTIFICATIONS DIRECTORY Home Quick Guide Contact Us UL.com

Search results

You may choose to [Refine Your Search.](#)

Company Name	Category Name	Link to File
OLYMPIA LIGHTING INC	Light-emitting-diode Recessed Luminaires	RZAO.E442509

Model number information is not published for all product categories. If you require information about a specific model number, please contact [Customer Service](#) for further assistance.

[Search Tips](#) [Print this page](#) [Terms of Use](#) [UL Family of Databases](#)

© 2017 UL LLC



DLC QPL

Rebates Programs Qualification ! Over 150 Area Light Fixtures Listed as DLC Premium! DesignLights Consortium (DLC) Qualified Product List (QPL)

The screenshot shows the DLC website interface. At the top, there is a navigation bar with links for FIND PRODUCTS, ABOUT US, OUR WORK, RESOURCES, NEWS & EVENTS, and JOIN US. A search icon and a user profile for Ram Shalvi are also present. The breadcrumb trail reads: Home / DLC Qualified Product Lists / Solid State Lighting.

The main content area features a search bar with the term "SBF" and a search tip: "For an exact search, use quotes around the search term (ex. 'PVOSLXDK')." Below the search bar are pagination controls (Prev, 1, 2, 3, 4, 5, 6, 7, Next) and a result count of "Viewing 1-25 of 156 results".

On the left side, there are filter options: "Listed Products", "Technical Requirements Version" (with a checkbox for 5.1 (347,254)), "LUNA Technical Requirements Version" (with a checkbox for 1.0 (414)), "Classification", and "Parent".

The "Active Filters" section shows "Manufacturer: OLYMPIA LIGHTING, INC." with a checkbox. Below this, a note states: "Grey shaded rows indicate parent products, which include tested data." The sorting is set to "Sorting by relevance".

The first product listed is "SBF-50W-35K-480V-[PC,MS]". It features a "DLC LISTED PREMIUM" badge. The manufacturer is "OLYMPIA LIGHTING, INC." and the brand is "Olympia Lighting". The primary use is "Outdoor Pole/Arm-Mounted Area and Roadway Luminaires" and the product ID is "PY7JG622". There is an "Add to my list" checkbox.

Our Stadium Light Fixtures has 378 Products Listed as DLC Premium ! DesignLights Consortium (DLC) Qualified Product List (QPL)

This screenshot shows the same DLC website interface but with the search term "SFL-". The search tip remains the same. The pagination controls now show "Viewing 1-25 of 378 results".

The filter options on the left are identical to the previous screenshot.

The "Active Filters" section shows "Manufacturer: OLYMPIA LIGHTING, INC." with a checkbox. The note about grey shaded rows and the sorting option "Sorting by relevance" are also present.

The first product listed is "SFL-350WD-22K-SF-277V [PC,MS,NC]". It features a "DLC LISTED PREMIUM" badge. The manufacturer is "OLYMPIA LIGHTING, INC." and the brand is "Olympia Lighting". The primary use is "Architectural Flood and Spot Luminaires" and the product ID is "P91K6LDR". There is an "Add to my list" checkbox.



IP Protection

Patent Protection of Existing & Future Products

UNITED STATES PATENT
Granted on November 27, 2018
Ram Shalvi
INVENTOR
Olympia Lighting, Inc.
US D834,737 S
LIGHTING FIXTURE



The Director of Patents and Trademarks has received an application for a patent for a new and useful invention. The requirements of law have been complied with, and it has been determined that a patent on the invention shall be granted under the law. Therefore, this

United States Patent

Grants to the person or persons having title to this patent the right to exclude others from making, using or selling the invention throughout the United States of America for the term of the patent, subject to the payment of maintenance fees as provided by law.

Andrei Iancu
Director of the United States Patent and Trademark Office

The United States of America



UNITED STATES PATENT
Granted on June 5, 2018
Ram Shalvi
INVENTOR
Olympia Lighting, Inc.
US D819,840 S
LIGHTING FIXTURE



The Director of Patents and Trademarks has received an application for a patent for a new and useful invention. The requirements of law have been complied with, and it has been determined that a patent on the invention shall be granted under the law. Therefore, this

United States Patent

Grants to the person or persons having title to this patent the right to exclude others from making, using or selling the invention throughout the United States of America for the term of the patent, subject to the payment of maintenance fees as provided by law.

Andrei Iancu
Director of the United States Patent and Trademark Office

The United States of America



UNITED STATES PATENT
Granted on January 5, 2021
Ram Shalvi
INVENTOR
Olympia Lighting, Inc.
US D907,257 S
LIGHT FIXTURE



The Director of Patents and Trademarks has received an application for a patent for a new and useful invention. The requirements of law have been complied with, and it has been determined that a patent on the invention shall be granted under the law. Therefore, this

United States Patent

Grants to the person or persons having title to this patent the right to exclude others from making, using or selling the invention throughout the United States of America for the term of the patent, subject to the payment of maintenance fees as provided by law.

Andrei Iancu
Director of the United States Patent and Trademark Office

The United States of America





Installations

Tens of Thousands of LED Lights sold across the United States

Hotels & Casinos Area Lighting

M Resort (Las Vegas, NV)
Tropicana Resort (Las Vegas, NV)
Tropicana Resort (Laughlin, NV)
Golden Nugget (Atlantic City, NJ)
Borgata Casino (Atlantic City, NJ)
Ocean Resort (Atlantic City, NJ)
Howard Johnson (Atlantic City, NJ)
Hollywood Casino (Baton Rouge, LA)
Hollywood Casino (Aurora, IL)
Hollywood Casino (Joliet, IL)
Hollywood Casino (Toledo, Dayton, OH)
Hollywood Casino (Charles Town, WV)
Hollywood Casino (Tunica, MS)
Hollywood Casino (Lawrenceburg, MS)
Zia Park Casino (Hobbs, NM)
Boomtown Casino (Biloxi MS)
1st Jackpot Casino (Tunica, MS)
L'Auberge Casino (Baton Rouge, LA)
Argosy Casino (Riverside, MO)
Grand Sierra Resort (Reno, NV)

Sport & Institutional Area Lighting

Levi's Stadium Training Center (Santa Clara, CA)
AT&T Park Training Center (San Francisco, CA)
USA Air Force football Team (San Antonio, TX)
York Professional Baseball Club, LLC.
USA Air Force football Team (Shiloh Valley, IL)
Alabama State Basketball (Montgomery, AL)
LIVINGSTONE COLLEGE BLUE BEARS (Salisbury, NC)
Sulphur Bluff High School (Talco, TX)
Wildcat Stadium (Palestine, TX)
Bulldogs Stadium (Greenwood, AR)
Bearcats Stadium (Mena, AR)
Fairfield Stadium (Fairfield, OH)
Alpine Tennis Field (Alpine, NJ)
Maccabi Tel Aviv F.C. (Israel)

International Installations

Dominican Republic

Mexico
Israel
Japan
Greece
Canada
Norway

List of Military Bases:

Fort Greely, AK
Coast Guard Base Alameda, CA
Army Corps of Engineers Bonneville Lock & Dam, OR
Fort Sam Houston, TX
Lackland Air Force Base, TX
Randolph Air Force Base, TX
Navy Base Port Hueneme, CA
Army Corps of Engineers Chief Joseph Dam, WA
Army Corps of Engineers St. Louis, MO
Army Corps of Engineers Gavins Point Project, NE
Army Corps of Engineers, Fort Thompson, SD
Army Corps of Engineers Oahe, SD
Scott Air Force Base, IL
Malmstrom Air Force Base, MT
Offutt Air Force Base, NE
Wright-Patterson Air Force Base, OH
Pope Army Airfield, North CA
Navy Base South West, CA
Fort Bragg, North CA



Installations Area & Street Lighting



WYNDHAM
HOTEL GROUP



Installations



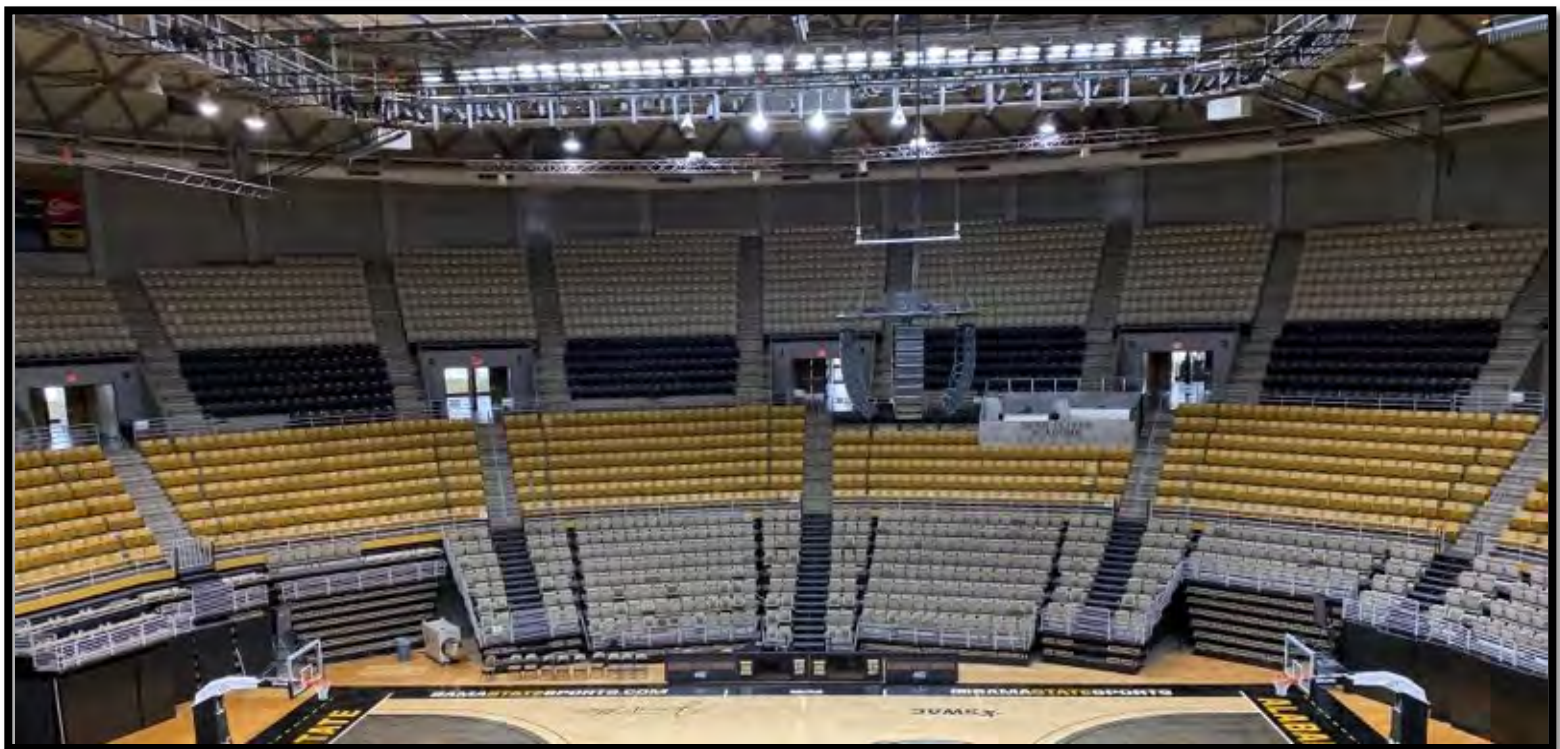
Compact Replacement LED Lamps

- Highest Lumens per Watt •
- Industry Smallest Form Factor •
- Designed to Fit Existing Fixtures •
- Built-in SPD • High PF • Low THD •
- 5-Years / 50,000 Hours Warranty^(*) •



Model	Product	Size	Power	Flux	Equivalent
SCL-7W12-55K-E26 SCL-7W12-55K-G24	7W E26/G24 LED Bulb 360°	Ø2"x4¼"	7W	1,050 lm	CFL 13W INC 60~75W
SCL-9W12-55K-E26 SCL-9W12-55K-G24	9W E26/G24 LED Bulb 360°	Ø2"x4⅝"	9W	1,350 lm	CFL 18W INC 75~100W
SCL-12W12-55K-E26 SCL-12W12-55K-G24	12W E26/G24 LED Bulb 360°	Ø2"x5¼"	12W	1,800 lm	CFL 26W HID 50W
SCL-15W12-55K-E26 SCL-15W12-55K-G24	15W E26/G24 LED Bulb 360°	Ø2"x5⅝"	15W	2,250 lm	CFL 32W HID 70W
SCL-18W12-55K-E26 SCL-18W12-55K-G24	18W E26/G24 LED Bulb 360°	Ø2"x5⅞"	18W	2,700 lm	CFL 42W HID 100W
CCL-10W12-55K-E26 CCL-10W12-55K-G24	10W E26/G24 LED Bulb 360°	Ø2¾"x5"	11W	1,550 lm	CFL 26W HID 50W
CCL-15W12-55K-E26 CCL-15W12-55K-G24	15W E26/G24 LED Bulb 360°	Ø2¾"x5"	16W	2,400 lm	CFL 32W HID 70W
CCL-20W12-55K-E26 CCL-20W12-55K-G24	20W E26/G24 LED Bulb 360°	Ø2¾"x6¼"	22W	3,300 lm	CFL42W HID 100W
CCL-25W12-55K-E26 CCL-25W12-55K-G24	25W E26/G24 LED Bulb 360°	Ø2¾"x7⅞"	26W	3,900 lm	CFL 57W HID 150W
CCL-30W12-55K-E26 CCL-30W12-55K-G24	30W E26/G24 LED Bulb 360°	Ø2¾"x7⅞"	30W	4,500 lm	CFL 70W HID 175W

Installations



HID Replacement LED Lamps

- 5-Years / 50,000 Hours Warranty^(*) •
- Built-in SPD • High PF • Low THD •
- Designed to Fit Existing Fixtures •
- Industry Smallest Form Factor •
- Highest Lumens per Watt •



US Patent D762,884S
D782.081S, D782082S

Model	Product	Size	Power	Flux	Equivalent
CL-20W8-55K-E39	LED Lamp 20W 360°	Ø3½x6¼"	20W	3,200 lm	100W
CL-30W8-55K-E39	LED Lamp 30W 360°	Ø3½x 8¾"	30W	5,000 lm	150W
CL-40W8-55K-E39	LED Lamp 40W 360°	Ø3½x6¼"	40W	6,400 lm	175W
CL-65W8-55K-E39	LED Lamp 65W 360°	Ø3½x 8¾"	65W	10,400 lm	250W
CL-80W8-55K-E39	LED Lamp 80W 360°	Ø3½x 9⅝"	80W	12,800 lm	320W
CL-100W8-55K-E39	LED Lamp 100W 360°	Ø3½x9¾"	100W	16,000 lm	400W
CL-120W11-55K-E39	LED Lamp 120W 360°	Ø4½x9¾"	120W	19,200 lm	500W
CL-150W11-55K-E39	LED Lamp 150W 360°	Ø4½x10¼"	150W	24,000 lm	600W
CL-200W12-55K-E39	LED Lamp 200W 360°	Ø5½x10"	200W	32,000 lm	800W
CL-250W12-55K-E39	LED Lamp 250W 360°	Ø5½x12½"	250W	40,000 lm	1,000W
CL-300W12-55K-E39	LED Lamp 300W 360°	Ø5½x12½"	300W	48,000 lm	1,200W
CL-350W12X-55K-E39	LED Lamp 350W 360°	Ø5½x13¾"	350W	56,000 lm	1,500W
CL-450W12X-55K-E39	LED Lamp 450W 360°	Ø5½x13¾"	450W	72,000 lm	1,800W
CL-500W12X-55K-E39	LED Lamp 500W 360°	Ø5½x13¾"	500W	80,000 lm	2,000W

Installations





Smart LED Lighting



480Vac HID Replacement LED Lamps

- 5-Years / 50,000 Hours Warranty^(*) •
- Built-in SPD • High PF • Low THD •
- Designed to Fit Existing Fixtures •
- Industry Smallest Form Factor •
- Highest Lumens per Watt •

208V – 277V – 347V – 480V



US Patent D762,884S
D782.081S, D782082S, D819,839

Model	Product	Size	Power	Flux	Equivalent
CL-20W8H-55K-E39	LED Lamp 20W 360°	Ø3½x6¼"	20W	3,200 lm	100W
CL-30W8H-55K-E39	LED Lamp 30W 360°	Ø3½x 8¾"	30W	5,000 lm	150W
CL-40W8H-55K-E39	LED Lamp 40W 360°	Ø3½x6¼"	40W	6,400 lm	175W
CL-65W8H-55K-E39	LED Lamp 65W 360°	Ø3½x 8¾"	65W	10,400 lm	250W
CL-80W8H-55K-E39	LED Lamp 80W 360°	Ø3½x 9⅝"	80W	12,800 lm	320W
CL-100W8H-55K-E39	LED Lamp 100W 360°	Ø3½x9¾"	100W	16,000 lm	400W
CL-120W11H-55K-E39	LED Lamp 120W 360°	Ø4½x9¾"	120W	19,200 lm	500W
CL-150W11H-55K-E39	LED Lamp 150W 360°	Ø4½x10¾"	150W	24,000 lm	600W
CL-200W12H-55K-E39	LED Lamp 200W 360°	Ø5½x10"	200W	32,000 lm	800W
CL-250W12H-55K-E39	LED Lamp 250W 360°	Ø5½x12½"	250W	40,000 lm	1,000W
CL-300W12H-55K-E39	LED Lamp 300W 360°	Ø5½x12½"	300W	48,000 lm	1,200W
CL-350W12XH-55K-E39	LED Lamp 350W 360°	Ø5½x13¾"	350W	56,000 lm	1,500W
CL-450W12XH-55K-E39	LED Lamp 450W 360°	Ø5½x13¾"	450W	72,000 lm	1,800W
CL-500W12XH-55K-E39	LED Lamp 500W 360°	Ø5½x13¾"	500W	80,000 lm	2,000W

Installations



HID Hi-BAY LED Lamps

- 5-Years / 50,000 Hours Warranty(★) •
- Built-in SPD • High PF • Low THD •
- Designed to Fit Existing Fixtures •
- Industry Smallest Form Factor •
- Highest Lumens per Watt •

120V - 208V - 277V - 347V - 480V



US Patent D907,257S

Model	Product	Size	Power	Flux	Equivalent
HBL-40W-55K-E39-60d	Hi-Bay Lamp 40W 55K 60°	7½ x 7½"	40W	6,600 lm	175W
HBL-60W-55K-E39-60d	Hi-Bay Lamp 60W 55K 60°	7½ x 7½"	60W	9,900 lm	250W
HBL-80W-55K-E39-60d	Hi-Bay Lamp 80W 55K 60°	7½ x 7½"	80W	13,200 lm	400W
HBL-100W-55K-E39-60d	Hi-Bay Lamp 100W 55K 60°	11" x 7½"	100W	14,000 lm	400W
HBL-120W-55K-E39-60d	Hi-Bay Lamp 120W 55K 60°	11" x 7½"	120W	16,800 lm	600W
HBL-150W-55K-E39-60d	Hi-Bay Lamp 150W 55K 60°	11" x 7½"	150W	21,000 lm	800W
HBL-200W-55K-E39-60d	Hi-Bay Lamp 200W 55K 60°	12½ x 8"	200W	28,000 lm	1,000W
HBL-250W-55K-E39-60d	Hi-Bay Lamp 250W 55K 60°	12½ x 8"	250W	35,000 lm	1,200W
HBL-300W-55K-E39-90d	Hi-Bay Lamp 300W 55K 60°	12½ x 8"	300W	42,000 lm	1,500W
HBL-350WXH-55K-E39-90d	Hi-Bay Lamp 350W 55K 60°	12½ x 8"	350W	55,000 lm	1,500W
HBL-420WXH-55K-E39-90d	Hi-Bay Lamp 420W 55K 60°	12½ x 8"	420W	66,000 lm	1,500W

Installations



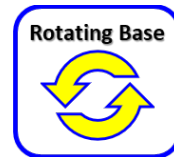
SOX LED Replacement Lamps

SOX LED Replacement for a Longer Life & Greater Energy Efficiency in Street Lights & Roadway Luminaires

Ballast By-Pass/Direct Wire – UL Type B

Features & Benefits:

- **Bright 230° Directional Light •**
- **High Power Factor – Self Ballasted •**
- **5-Years / 50,000 Hours Warranty (*) •**
- **Suitable for Open & Enclosed Fixtures •**
- **Built-in Surge Suppressors & Protection •**
- **ETL Certified to UL1598C and UL1993 • [PENDING]**
- **Optional Input Voltage 120~277Vac & 208~480Vac •**



U.S. Pat. D910,885

Model	Product	Size	Power	Flux	SOX Equal
SOX35-20WB-22K-B22R SOX35-20WBH-22K-B22R	SOX35 LED Lamp 20W 230° 22K B22	Ø2 ⁵ / ₈ x (L) 12 ¹ / ₄ "	25W Max.	3,250 Lumen	SOX 35W LS-35-BY22d
SOX55-40WB-22K-B22R SOX55-40WBH-22K-B22R	SOX55 LED Lamp 40W 230° 22K B22	Ø2 ⁵ / ₈ x (L) 16 ³ / ₄ "	41W Max.	5,300 Lumen	SOX 55W LS-55-BY22d
SOX90-65WB-22K-B22R SOX90-65WBH-22K-B22R	SOX90 LED Lamp 65W 230° 22K B22	Ø2 ⁵ / ₈ x (L) 20 ³ / ₄ "	73W Max.	10,900 Lumen	SOX 90W LS-90-BY22d
SOX135-80WB-22K-B22R SOX135-80WBH-22K-B22R	SOX135 LED Lamp 80W 230° 22K B22	Ø2 ⁵ / ₈ x (L) 30 ¹ / ₂ "	85W Max.	12,750 Lumen	SOX 135W LS-135-BY22d
SOX180-100WB-22K-B22R SOX180-100WBH-22K-B22R	SOX180 LED Lamp 100W 230° 22K B22	Ø2 ⁵ / ₈ x (L) 44"	100W Max.	15,000 Lumen	SOX 180W LS-180-BY22d

Installations



LED Retrofit Kits

Suitable for Outdoor Wall-Mounted Area Luminaires & Outdoor Pole/Arm-Mounted Area and Roadway Luminaires



Features & Benefits:

- High Power Factor •
- Built-in Surge Suppressors •
- Bright • High CRI • Low THD •
- 5-Years / 50,000 Hours Warranty (★)



Model	Product	Size	Power	Flux	HID Equal
LRK-30W-57K-277V	30W LED Retrofit Kit 5,700K 277V 120°	LED Engine (L) 4¾" (W) 4¾" (D) 1¾"	30W	4,600 Lumen	100/150W MH
LRK-45W-57K-277V	45W LED Retrofit Kit 5,700K 277V 120°		45W	5,900 Lumen	150/175W MH
LRK-60W-57K-277V	60W LED Retrofit Kit 5,700K 277V 120°		60W	8,450 Lumen	250W MH
LRK-65W-57K-480V	60W LED Retrofit Kit 5,700K 480V 120°		65W	8,450 Lumen	250W MH
LRK-80W-57K-277V	80W LED Retrofit Kit 5,700K 277V 120°	LED Engine (L) 6⅞" (W) 5" (D) 2⅜"	80W	10,400 Lumen	320W MH
LRK-100W-57K-277V LRK-100W-57K-480V	100W LED Retrofit Kit 5,700K 277V 120°		100W	13,000 Lumen	400W MH
LRK-120W-57K-277V LRK-120W-57K-480V	120W LED Retrofit Kit 5,700K 277V 120°		120W	15,600 Lumen	600W MH
LRK-150W-57K-277V LRK-150W-57K-480V	150W LED Retrofit Kit 5,700K 120°	LED Engine (L) 10⅝" (W) 6¼" (D) 2⅜"	150W	19,500 lm	600W MH
LRK-200W-57K-480V LRK-240W-57K-277V	200W LED Retrofit Kit 5,700K 120°		200W 240W	31,200 lm	1,000W MH
LRK-300W-57K-480V LRK-320W-57K-277V	320W LED Retrofit Kit 5,700K 120°	LED Engine (L) 12⅝" (W) 9¼" (D) 3"	300W 320W	41,600 lm	1,200W MH
LRK-370W-57K-277V LRK-450W-57K-480V	400W LED Retrofit Kit 5,700K 120°		370W 450W	52,000 lm	1,500W MH



Installations





Smart LED Lighting

LED Tubes

Features & Benefits:

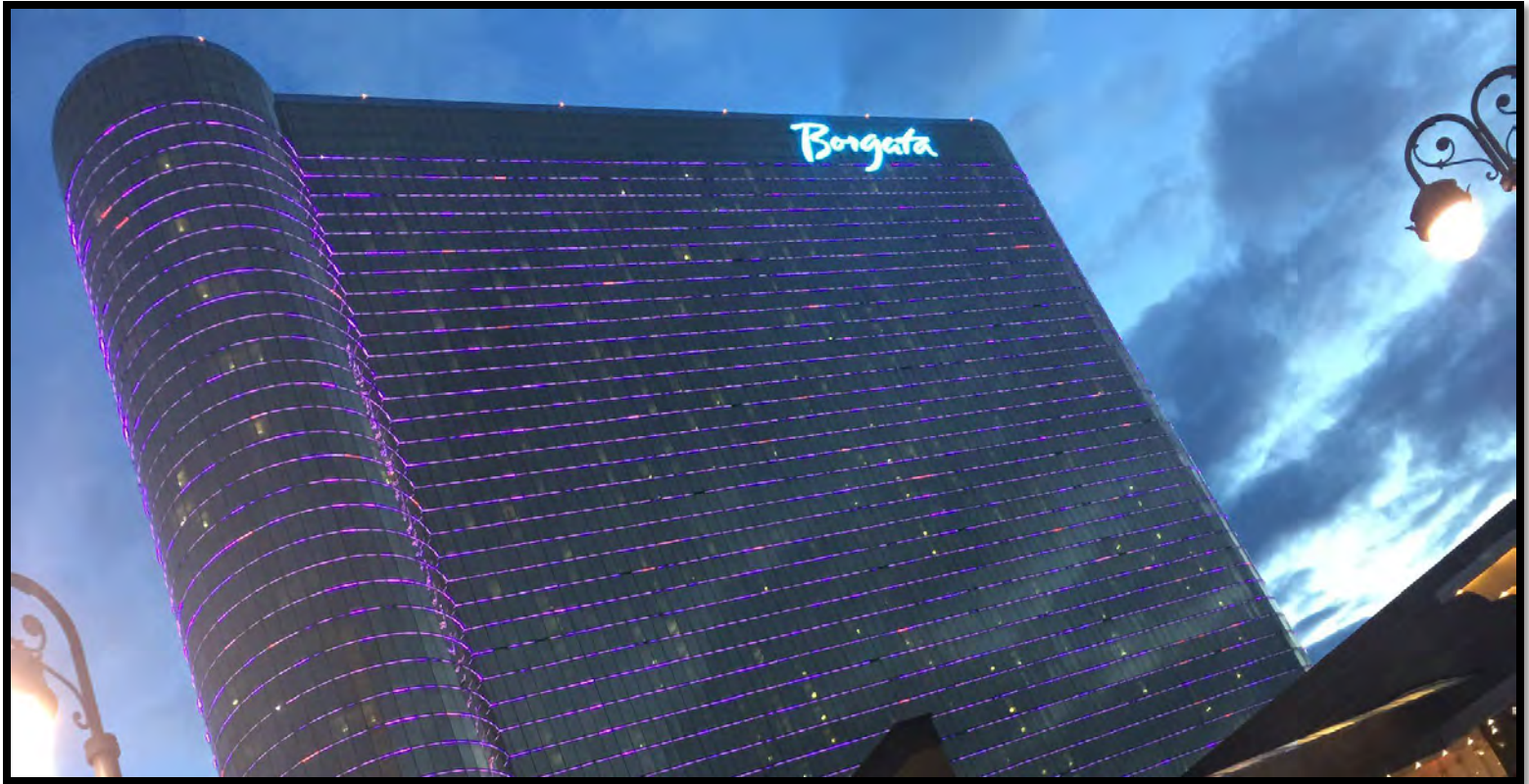
- Flicker Free Lighting •
- Shatter Proof Design •
- Low Temp. Instant Start •
- Ballast Compatible or Direct Wire •
- 5-Years / 50,000 Hours Warranty (*) •
- No Ballast – Cost & Power Saving •
- Low Energy, High Lumen per Watt •
- Color Temp. 3000K, 4000K, 5000K •



Model	Product	Power	Flux	Equivalent
F16T8D-8W-50K-DBD	T8 LED Tube 2ft. 8W 5000K	8W	1,070 Lumen	F17T8 17W
F32T8D-12W-50K-DBD	T8 LED Tube 4ft. 12W 5000K	12W	1,680 Lumen	F32T8/12 32W F28T8 28W
F32T8D-16W-50K-DBD	T8 LED Tube 4ft. 16W 5000K	16W	2,160 Lumen	F32T8/12 32W F28T8 28W
F32T8D-xxW-ccK-DBD	T8 LED Tube 4ft 24W 6500K Frosted 10W-12W-15W-18W-24W 30K,35K,40K,50K,57K,65K	24W	3,126 Lumen	F32T8/12 24W
F24T5F-12W-40K-DBC	T5 LED Tube 2ft. 12W 4000K	12W	1,500 lm	F24T5 24W 2ft HO FL Tube
F39T5F-16W-40K-DBC	T5 LED Tube 3ft. 16W 4000K	16W	2,000 lm	F39T5 39W 3ft HO FL Tube
F54T5F-25W-40K-DBC	T5 LED Tube 4ft. 25W 4000K	25W	3,125 lm	F54T5 54W 4ft HO FL Tube
F96T8D-32W-55K-Fa8	T8 LED Tube 8ft. 32W, 5500K Single Pin Fa8	32W	4,160 lm	F96T8 64W
F96T8D-32W-55K-RDC	T8 LED Tube 8ft. 32W, 5500K Reduced Double Contact Base RDC	32W	4,160 lm	F96T8 64W



Installations





Smart LED Lighting



2x4 & 2x2 LED Panel

2x2 Luminaires for Ambient Lighting of Interior Commercial Spaces

Features & Benefits:

- Great Energy Savings ! •
- CCT & Wattage Adjustable •
- 0~10V Dimmable LED Driver •
- High Power Factor – Self Ballasted •
- 5-Years / 50,000 Hours Warranty (*) •
- Bright – High CRI – High Lumen Output •
- Built-in Surge Suppressors & Protection •



Model	Product	Power	Flux	Equivalent
T-BAR-2x2FT-40WD-40KA	40W T-Bar 2x2' LED Flat Panel 5000K 120~277V DIM	40W	5,200 Lumen	4 x F17T8 (17W) 2 x FB32T8 (32W)
T-BAR-2x4FT-50WD-40KA	50W T-Bar 2x4' LED Flat Panel 4000K 120~277V DIM	50W	6,500 Lumen	3 x F32T8 (32W) 4 x F32T8 (32W)
T-BAR-2x2FT-40WD-40KB	40W T-Bar 2x2' LED Center Basket Panel 5000K 120~277V DIM	40W	5,200 Lumen	4 x F17T8 (17W) 2 x FB32T8 (32W)
T-BAR-2x4FT-50WD-40KB	50W T-Bar 2x4' LED Center Basket Panel 4000K 120~277V DIM	50W	6,500 Lumen	3 x F32T8 (32W) 4 x F32T8 (32W)

- 120-277Vac ~50/60Hz • Junction Box/Terminal Block • P.F. > 0.9 • 130 lm/W • CRI 85 •
- (*) Rated Life > 50,000 Hrs. (L₇₀ B₅₀) at T_[A] 25°C Max. • CCT 5000K (50K), 4000K (40K), 3000K (30K) ±10% •
- "Equivalent" ÷ Comparable Equivalence to T8/T12 2ft. or U-Bent Florescent Tubes •

Installations

**Lyndhurst Football Field
Replacing 1,500MH with 600W LED Sports Lighter**



**Rochelle Park Baseball Field
Replacing 1,500MH with 500W LED Sports Lighter**





Smart LED Lighting



LED Stadium & Sports Lighter

Features & Benefits:

- Great Energy Savings ! •
- Directive 15~60° Beam Angle •
- 10-Years/80K Hours Warranty •
- Input Voltage Range 208V-480V •
- IP65(##) Suitable for Wet Locations •
- Built-in 20KV/10KA Surge Protection •
- 0~10V Dimming & Optional Integral Controls •



Model	Product	Size	Power	Flux	HID Equal
SFL-400W-50K-NF-277V SFL-400W-50K-NF-480V	LED Stadium Flood Light 400W 50K 40° 277V/480V	Ø 15" (H) 18"	400W	68,000 Lumens	1,000W
SFL-500W-50K-NF-277V SFL-500W-50K-NF-480V	LED Stadium Flood Light 500W 50K 40° 277V/480V	Ø 15" (H) 18"	500W	85,000 Lumens	1,500W
SFL-600W-50K-NF-277V SFL-600W-50K-NF-480V	LED Stadium Flood Light 600W 50K 40° 277V/480V	Ø 18" (H) 20"	600W	100,000 Lumens	1,500W
SFL-800W-50K-NF-277V SFL-800W-50K-NF-480V	LED Stadium Flood Light 800W 50K 40° 277V/480V	Ø 18" (H) 20"	800W	136,000 Lumens	2,000W

Installations





Smart LED Lighting

RGBW LED Stadium & Sport Lighter

Features & Benefits:

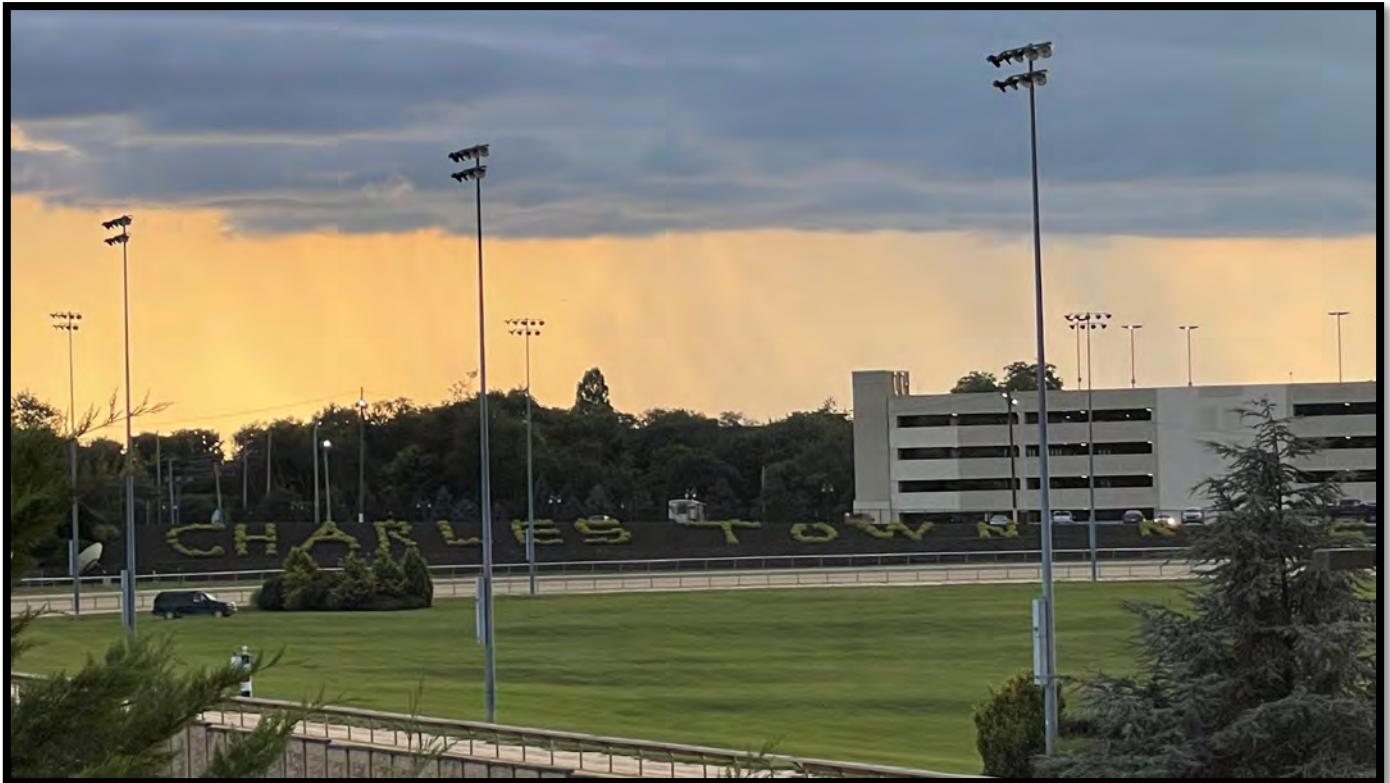
- Directive 15° ~ 60° Beam Angle •
- 10-Years / 80,000 Hours Warranty (*) •
- Input Voltage Range 208Vac ~ 480Vac •
- IP66(##) Suitable for Damp & Wet Locations •
- Built-in 20KV/10KA Surge Protection (SPD) •
- DMX512 Dimming and RGBW Color Controls •
- 4-Channels (RGBW) Remote Driver Operation (@) •
- Flicker Free <2%, Low THD <20%, High PF >0.95 •



Model	Product	Size	Power	Flux	HID Equal
SFL-500WD-55K-xF-480V RGBW DMX512	RGBW LED Stadium Flood Light DMX512 Control 500W WHT 55K 15° 480V	Ø 18 1/8" (H) 20"	500W	75,000 Lumens White	1,000W
SFL-800WD-55K-xF-480V RGBW DMX512	RGBW LED Stadium Flood Light DMX512 Control 800W WHT 55K 15° 480V	Ø 18 1/8" (H) 20"	800W	120,000 Lumens White	1,500W

- Colors Wavelength: RED: 620 to 630nm; GREEN: 520 to 530nm; BLUE: 465 to 475nm •
- "SF" 15°, "NF" 40°, "MF" 60° • EPA 2.5 • Flicker Free Less than 2% • Low Glare <40 •
- (@) Supports DMX/RDM Protocols. Available as Internal or Remote Driver •

Installations





Smart LED Lighting



LED Stadium & Sport Lighter

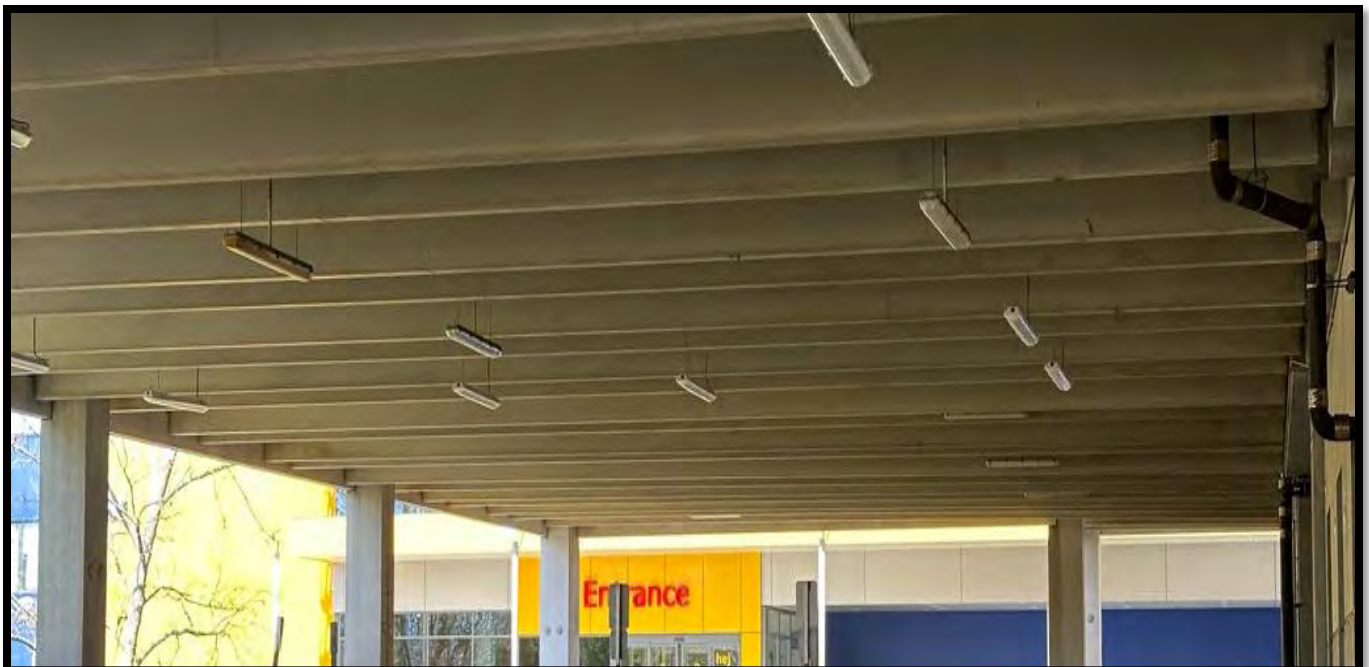
Features & Benefits:

- Great Energy Savings ! •
- Directive 15° ~ 60° Beam Angle •
- 10-Years / 80,000 Hours Warranty (★) •
- Input Voltage Range 120V-277V-480V •
- IP65(≠) Suitable for Damp & Wet Locations •
- Built-in 20KV/10KA Surge Protection (SPD) •
- 0~10V Dimming & Optional Integral Controls •



Model	Product	Size	Power	Flux	HID Equal
SFL-150WD-50K-NF-277V SQ SFL-150WD-50K-NF-480V SQ	LED Stadium Flood Light 150W 50K NF 277V/480V	(L) 22" (H) 14" (D) 10"	150W	22,500 Lumens	1,000W
SFL-200WD-50K-NF-277V SQ SFL-200WD-50K-NF-480V SQ	LED Stadium Flood Light 200W 50K NF 277V/480V		200W	30,000 Lumens	1,000W
SFL-250WD-50K-NF-277V SQ SFL-250WD-50K-NF-480V SQ	LED Stadium Flood Light 250W 50K NF 277V/480V		250W	37,500 Lumens	1,500W
SFL-300WD-50K-NF-277V SQ SFL-300WD-50K-NF-480V SQ	LED Stadium Flood Light 300W 50K NF 277V/480V		300W	45,000 Lumens	1,000W
SFL-400WD-50K-NF-277V SQ SFL-400WD-50K-NF-480V SQ	LED Stadium Flood Light 400W 50K NF 277V/480V		400W	60,000 Lumens	1,000W
SFL-500WD-50K-NF-277V SQ SFL-500WD-50K-NF-480V SQ	LED Stadium Flood Light 500W 50K NF 277V/480V		500W	75,000 Lumens	1,500W
SFL-600WD-50K-NF-277V SQ SFL-600WD-50K-NF-480V SQ	LED Stadium Flood Light 600W 50K NF 277V/480V		600W	90,000 Lumens	1,500W
SFL-800WD-50K-NF-277V SQ SFL-800WD-50K-NF-480V SQ	LED Stadium Flood Light 800W 50K NF 277V/480V		2 Fixtures: (L) 22" (H) 14" (D) 10"	800W	120,000 Lumens
SFL-1200WD-50K-NF-277V SQ SFL-1200WD-50K-NF-480V SQ	LED Stadium Flood Light 1,200W 50K NF 277V/480V		1,200W	180,000 Lumens	2x1,500W

Installations



Vapor Tight LED Fixtures

LED Linear Ambient Luminaires
LED High-Bay / Low-Bay Luminaires



**RIBBED
LENS**

**FROSTED
LENS**

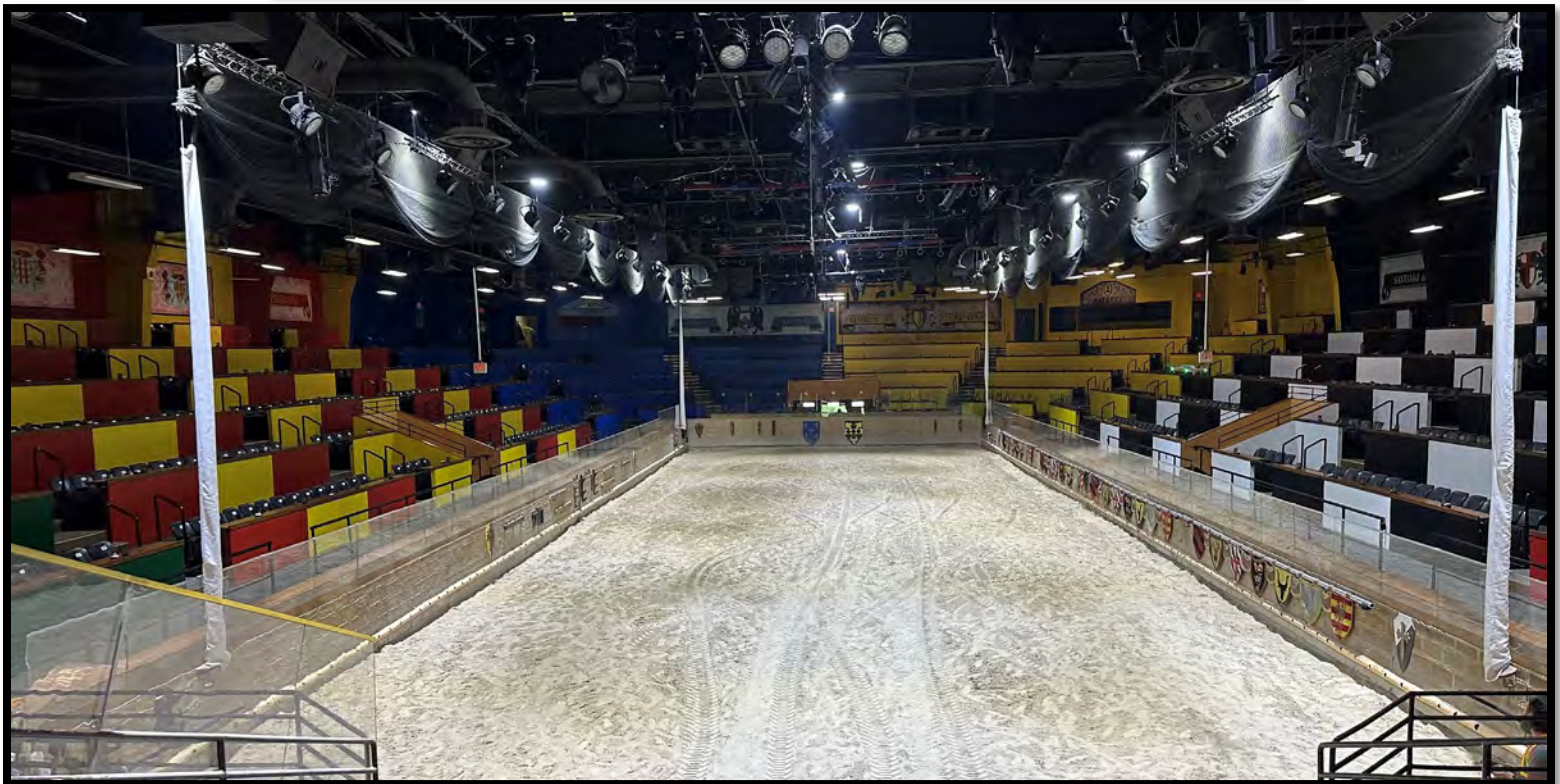
Features & Benefits:

- **Dust & Vapor Proof Fixture •**
- **High Power Factor – Self Ballasted •**
- **5-Years / 50,000 Hours Warranty (*) •**
- **Bright – High CRI – High Lumen Output •**
- **Built-in Surge Suppressors & Protection •**



Model	Product	Power	Flux	Equivalent
VPL-4FT-30W-55K	LED Vapor Tight Fixture 4ft. 30W 5000K	30W	4,800 Lumen	2 x F32T8/12 (4ft. 32W ea.)
VPL-4FT-40W-55K	LED Vapor Tight Fixture 4ft. 40W 5000K	40W	6,400 Lumen	2 x F49T5 (4ft. 49W ea.)
VPL-4FT-50W-55K	LED Vapor Tight Fixture 4ft. 50W 5000K	50W	8,000 Lumen	2 x F54T5HO (4ft. 54W ea.)
VPL-8FT-60W-55K	LED Vapor Tight Fixture 8ft. 60W 5000K	60W	9,600 Lumen	2 x F96T8/12 4 x F32T8/12
VPL-8FT-80W-55K	LED Vapor Tight Fixture 8ft. 80W 5000K	80W	12,800 Lumen	2 x F96T8/12 4 x F49T5
VPL-8FT-100W-55K	LED Vapor Tight Fixture 8ft. 100W 5000K	100W	16,000 Lumen	2 x F96T8HO 4 x F54T5HO

Installations





Smart LED Lighting



Hi-Bay LED Fixtures IP65 UFO

LED High-Bay Luminaires for
Commercial & Industrial Buildings
Dust & Water Proof



Features & Benefits:

- IP65 – Dust & Water Proof •
- Built-in Surge Suppression •
- High Power Factor • Low THD •
- Directive 60°/90° Beam Angles •
- High CRI • High Lumen Output •
- 5-Years | 50,000 Hours Warranty(★) •



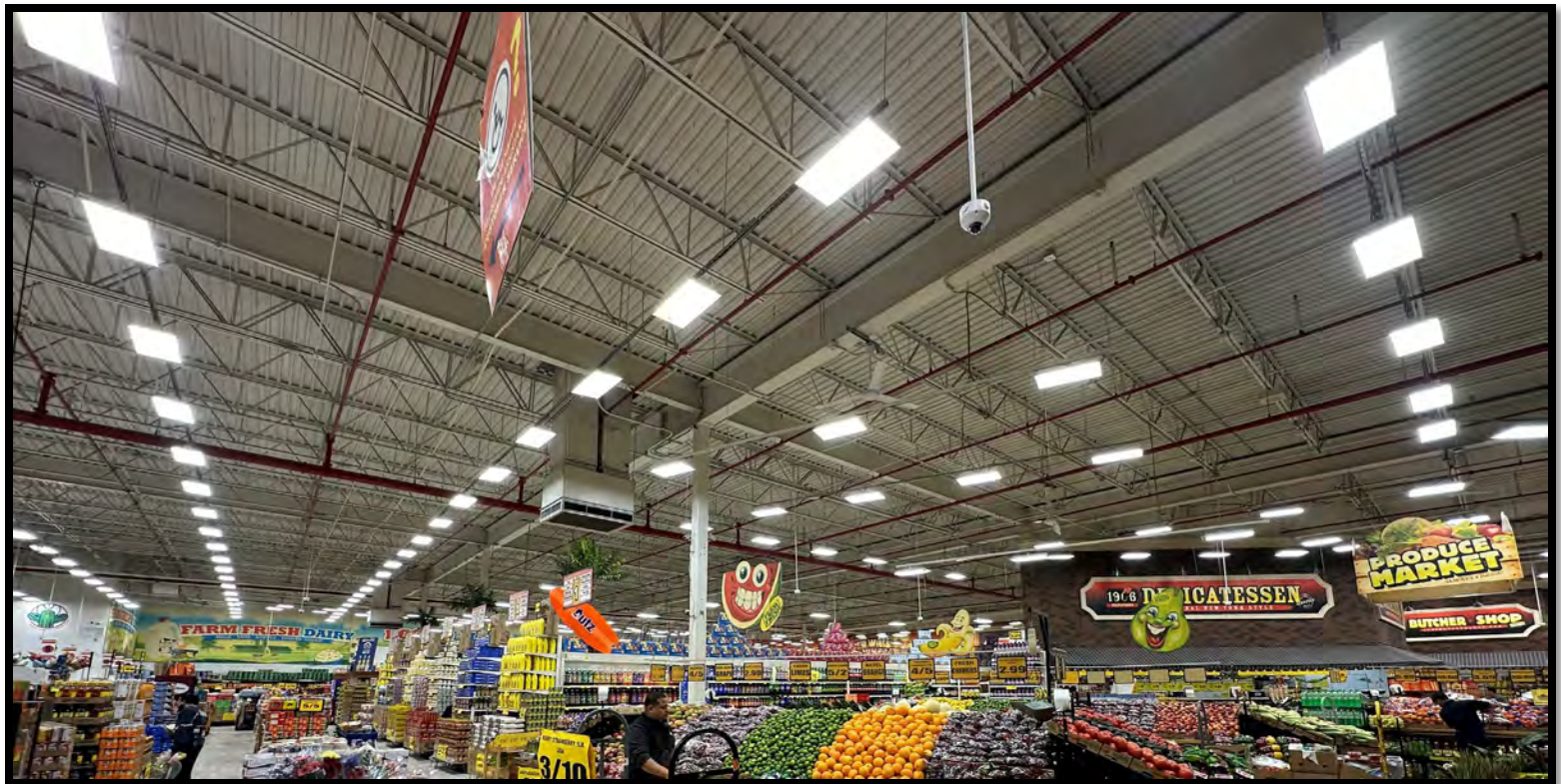
45°/60°/90°/120° Beam Angle
available on request

IP65 ≈ NEMA Enclosure Rating 4



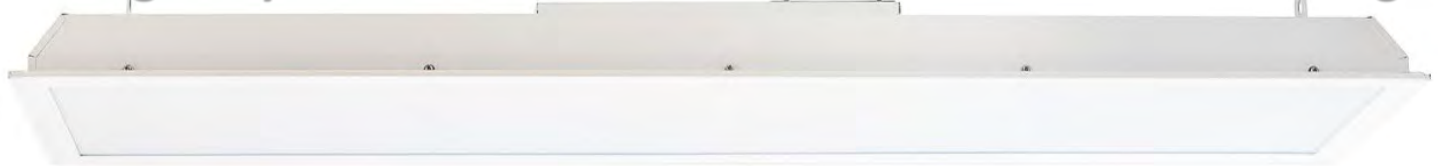
Model	Product	Power	Flux	Equivalent
HBF-100W-55K-60d-277V HBF-100W-55K-60d-480V	Hi-Bay 100W 5500K 60°	100W	14,000 lm	400W MH
HBF-120W-55K-60d-277V HBF-120W-55K-60d-480V	Hi-Bay 120W 5500K 60°	120W	16,800 lm	500W MH
HBF-150W-55K-60d-277V HBF-150W-55K-60d-480V	Hi-Bay 150W 5500K 60°	150W	21,000 lm	600W MH
HBF-200W-55K-60d-277V HBF-200W-55K-60d-480V	Hi-Bay 200W 5500K 60°	200W	28,000 lm	750W MH
HBF-250W-55K-60d-277V HBF-250W-55K-60d-480V	Hi-Bay 250W 5500K 60°	250W	35,000 lm	1,000W MH
HBF-300W-55K-90d-277V HBF-300W-55K-60d-480V	Hi-Bay 300W 5500K 60°	300W	42,000 lm	1,200W MH

Installations



Linear High-Bay LED Fixture

LED High-Bay Luminaires for Commercial and Industrial Buildings



Features & Benefits:

- High Power Factor – Self Ballasted •
- 5-Years / 50,000 Hours Warranty (*) •
- Built-in Surge Protection Device (SPD) •
- Bright – High CRI – High Lumen Output •



Model	Product	Power	Flux	Equivalent
HB4F-100W-55K-277V HB4F-100W-55K-480V	LED Linear High-Bay 100W 5500K 277V/480V Frost	100W	13,000 Lumen	320W MH 4 x F32T8/12
HB4F-120W-55K-277V HB4F-120W-55K-480V	LED Linear High-Bay 120W 5500K 277V/480V Frost	120W	15,600 Lumen	400W MH 4 x F54T5HO
HB4F-150W-55K-277V HB4F-150W-55K-480V	LED Linear High-Bay 150W 5500K 277V/480V Frost	150W	19,500 Lumen	600W MH 2 x F96T8HO
HB4FF-200W-55K-277V HB4F-200W-55K-480V	LED Linear High-Bay 200W 5500K 277V/480V Frost	200W	26,000 Lumen	>600W MH 6 x F54T5HO
HB4FF-250W-55K-277V HB4F-250W-55K-480V	LED Linear High-Bay 250W 5500K 277V/480V Frost	250W	33,300 Lumen	1,000W MH 8 x F54T5HO
HB4FF-300W-55K-277V HB4F-300W-55K-480V	LED Linear High-Bay 300W 5500K 277V/480V Frost	300W	39,000 Lumen	1,500W MH 10 x F54T5HO

Installations





Smart LED Lighting



Modular LED Flood Light / Wall Wash

Features & Benefits:

- Great Energy Savings ! •
- Directive NF/MF/WF Beam Angle •
- High Power Factor – Self Ballasted •
- 10-Years / 80,000 Hours Warranty (★) •
- Bright – High CRI – High Lumen Output •
- Built-in Surge Suppressors & Protection •



Model	Product	Power	Flux	HID Equal
MFL-50W-55K-WF-277V MFL-50W-55K-WF-480V	50W Modular Flood Light	50W	7,000lm	175W
MFL-100W-55K-WF-277V MFL-100W-55K-WF-480V	100W Modular Flood Light	100W	14,000lm	400W
MFL-150W-55K-WF-277V MFL-150W-55K-WF-480V	150W Modular Flood Light	150W	21,000lm	600W
MFL-200W-55K-WF-277V MFL-200W-55K-WF-480V	200W Modular Flood Light	200W	28,000lm	800W
MFL-250W-55K-WF-277V MFL-250W-55K-WF-480V	250W Modular Flood Light	250W	35,000lm	1,000W
MFL-300W-55K-NF-277V MFL-300W-55K-WF-480V	300W Modular Flood Light	300W	42,000lm	1,200W
MFL-350W-55K-NF-277V MFL-350W-55K-WF-480V	350W Modular Flood Light	350W	49,000lm	1,500W
MFL-420W-55K-NF-277V MFL-420W-55K-WF-480V	420W Modular Flood Light	420W	58,800lm	1,800W

Installations



LED Shoebox Fixtures

LED Outdoor Pole/Arm-Mounted
Area and Roadway Luminaires



Features & Benefits:

- Built-in Surge Suppression •
- High Power Factor • Low THD •
- High CRI • High Lumen Output •
- 5-Years | 50,000 Hours Warranty (*) •



Model	Product	Size	Power	Flux	Equivalent
SBF-30W-50K-277V SBF-30W-50K-480V	LED Shoebox Fixture 30W 5000K 277V	12.4x5.3x3"	30W	4,500 lm	175W MH
SBF-60W-50K-277V SBF-60W-50K-480V	LED Shoebox Fixture 60W 5000K 277V	16.9x6.3x3."	60W	9,000 lm	250W MH
SBL-150W-50K-277V SBL-150W-50K-480V	LED Shoe Box Fixture 150W 5000K 277V	19x15x3¼"	150W	22,500 Lm	800W MH
SBL-200W-50K-277V SBL-200W-50K-480V	LED Shoe Box Fixture 200W 5000K 277V	19x15x3¼"	200W	30,000 Lm	1,000W MH
SBL-250W-50K-277V SBL-250W-50K-480V	LED Shoe Box Fixture 250W 5000K 277V	23x15x3¼"	250W	37,500 Lm	1,000W MH
SBL-320W-50K-277V SBL-320W-50K-480V	LED Shoe Box Fixture 320W 5000K 277V	23x15x3¼"	320W	48,000 Lm	1,500W MH
SBL-420W-50K-277V SBL-420W-50K-480V	LED Shoe Box Fixture 320W 5000K 480V	23x15x3¼"	420W	63,000 Lm	1,500W MH

Installations



LED Street Light Fixtures

LED Outdoor Pole/Arm-Mounted Area and Roadway Luminaires



Features & Benefits:

- 20KV/10KA Surge Protection • U.S. Pat. D906,565S
- High Power Factor • Low THD •
- High CRI • High Lumen Output •
- 7-Pin NEMA Socket + Shorting Plug •
- 10-Years | 50,000 Hours Warranty (*) •
- Dimmable, Photocell & Wireless Ready



Model	Product	Size	Power	Flux	Equivalent
STL-50W-40K-277V STL-50W-40K-480V	LED Street Light 50W 4000K 277V/480V	L: 21¼" W: 11" H: 5¼" L: 54cm W: 28cm H: 13cm	50W	8,000 lm	175W MH
STL-70W-40K-277V STL-70W-40K-480V	LED Street Light 70W 4000K 277V/480V		70W	11,000 lm	250W MH
STL-90W-40K-277V STL-90W-40K-480V	LED Street Light 90W 4000K 277V/480V		90W	14,800 lm	400W MH
STL-100W-40K-277V STL-100W-40K-480V	LED Street Light 100W 4000K 277V/480V		100W	15,900 lm	600W MH
STL-120W-40K-277V STL-120W-40K-480V	LED Street Light 120W 4000K 277V/480V		120W	18,300 lm	800W MH

Installations





Smart LED Lighting

Circular LED Area Luminaire

Outdoor Pole/Arm-Mounted Area and Roadway Luminaire

Features & Benefits:

- Great Energy Savings ! •
- Directive 90~120° Beam Angle •
- 5-Years | 50,000 Hours Warranty (★) •
- High Power Factor – UL Listed Driver •
- Bright – High CRI – High Lumen Output •
- Built-in Surge Suppressors & Protection •
- CCT 5,000K ideal for MH Lamps Replacement •



Model	Product	Size	Power	Flux	Equivalent
ALF-50W-50K-277V ALF-50W-50K-480V	Post Top LED Area Light 50W 5000K 277V/480V	(L) 25 ³ / ₄ " (Ø) 17 ³ / ₄ "	50W	6,500 Lumen	175W MH
ALF-75W-50K-277V ALF-75W-50K-480V	Post Top LED Area Light 75W 5000K 277V/480V		75W	9,500 Lumen	250W MH
ALF-100W-50K-277V ALF-100W-50K-480V	Post Top LED Area Light 100W 5000K 277V/480V		100W	12,500 Lumen	400W MH

- 120-277Vac ~50/60Hz • Junction Box/Terminal Block • P.F. > 0.9 • 130 lm/W • CRI 85 •
- (★) Rated Life > 50,000 Hrs. (L₇₀ B₅₀) at T_A 25°C Max. • CCT 5000K (50K), 4000K (40K), 3000K (30K) ±10% •
- "Equivalent" ÷ Comparable Equivalence to T8/T12 2ft. or U-Bent Florescent Tubes •

Installations



LED Wall Packs

Outdoor Wall-Mounted Area Luminaires

Features & Benefits:

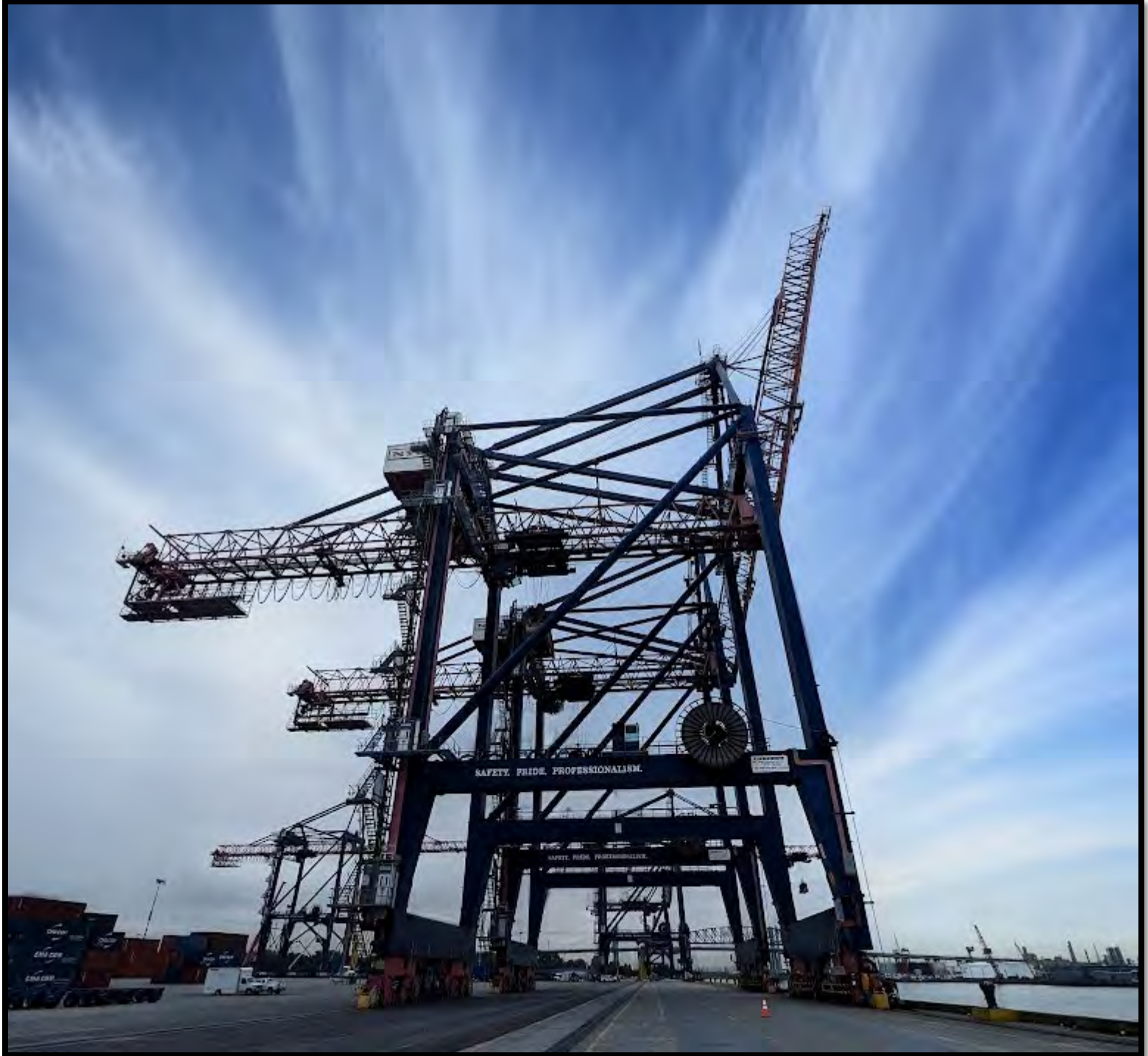
- Great Energy Savings ! •
- Wide Horizontal Beam Angle •
- High Power Factor – Self Ballasted •
- 5-Years / 50,000 Hours Warranty (*) •
- Bright – High CRI – High Lumen Output •
- Built-in Surge Suppressors & Protection •



Model	Product	Power	Flux	Equivalent
WP-40W-55K-277V	40W LED Wall Pack	40W	4,850lm	175W
WP-60W-55K-277V	60W LED Wall Pack	60W	7,310lm	250W
WP-80W-55K-277V	80W LED Wall Pack	80W	10,170m	320W
WP-100W-55K-277V	100W LED Wall Pack	100W	13,090lm	400W
WP-120W-55K-277V	120W LED Wall Pack	120W	14,600lm	600W
WP-120W-55K-277V L	120W LED Wall Pack Large	120W	14,600lm	600W

- 120-277Vac ~50/60Hz • Pigtail Wire/Cable • P.F. > 0.9 • 115~130 lm/W • CRI ≈ 80 •
- (*) Rated Life 50,000 Hrs. (L₇₀ B₅₀) at T_[A] 25°C Max. • CCT 5500K (55K) ±10% •
- “Equivalent” ÷ Comparable Equivalence to Metal Halide Lamps Wattage •

Installations



LED Flood Lights / Wall Washer

Features & Benefits:

- Great Energy Savings ! •
- High Power Factor – Self Ballasted •
- 5-Years / 50,000 Hours Warranty (*) •
- Bright – High CRI – High Lumen Output •
- Built-in Surge Suppressors & Protection •



Model	Product	Power	Flux	Equivalent
FL-30W-55K-277V	30W LED Flood Light	30W	3,900lm	100W ~ 175W
FL-50W-55K-277V	50W LED Flood Light	50W	6,500lm	200W ~ 250W
FL-80W-55K-277V	80W LED Flood Light	80W	10,400lm	320W
FL-100W-55K-277V	100W LED Flood Light	100W	13,000lm	400W
FL-120W-55K-277V	120W LED Flood Light	120W	15,600lm	600W
FL-150W-55K-277V	150W LED Flood Light	150W	19,500lm	1,000W
FL-200W-55K-277V	200W LED Flood Light	200W	26,000lm	1,500W
FL-240W-55K-277V	240W LED Flood Light	240W	31,200lm	1,500W

- 120-277Vac ~50/60Hz • Pigtail Wire/Cable • P.F. > 0.9 • ~130 lm/W • CRI ≈ 80 •
- (*) Rated Life > 36,000 Hrs. (L₇₀ B₅₀) at T_[A] 25°C Max. • CCT 5500K (55K) ±10% •
- “Equivalent” ÷ Comparable Equivalence to Metal Halide Lamps Wattage •
 - “-UL” ÷ UL Listed Product; Others with UL Listed LED Driver •
 - FL-30W; FL-50W; FL-200W; FL-240W are NOT DLC Listed •

Installations



LED Canopy Fixture for Parking Garage

Features & Benefits:

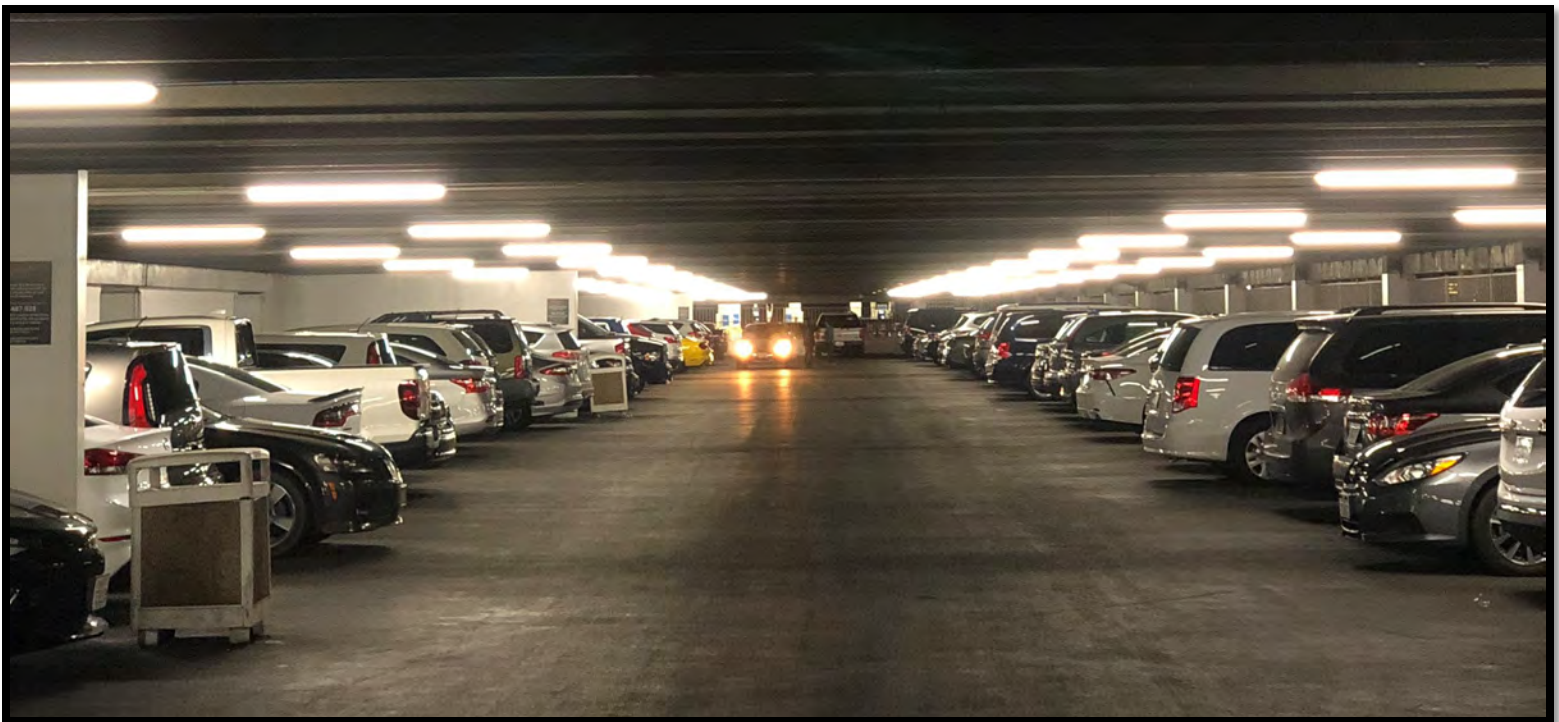
- Great Energy Savings ! •
- High CRI • High Lumen Output •
- High Power Factor – Self Ballasted •
- 5-Years / 50,000 Hours Warranty (★) •
- Bright – High CRI – High Lumen Output •
- IESNA LM-79-2008 & LM-80-2008 Tested •



Model	Product	Power	Flux	Equivalent
PGF-30W-50K-277V	LED Parking Garage Luminaire 30W 5000K 277V	30W	4,500 lm	100W ~ 150W
PGF-50W-50K-277V	LED Parking Garage Luminaire 50W 5000K 277V	50W	7,500lm	175W
PGF-75W-50K-277V	LED Parking Garage Luminaire 75W 5000K 277V	75W	11,200lm	250W

- 120~277Vac ~50/60Hz • P.F. > 0.95 • Pigtail Wire/Cable or J-Box Mount • ~120lm/W • CRI ≈ 82 •
- “Eqv.” ÷ Comparable Equivalence to Metal Halide Lamps Wattage

Installations



Linear Surface Mount LED Fixtures

- High Power Factor • Self Ballasted •
- 5-Years / 50,000 Hours Warranty (*) •
- Bright • High CRI • High Lumen Output •
- Built-in Surge Suppressors & Protection •



Model	Product	Size	Power	Flux	Equivalent
WML-4FT-18W-55K	Wall Mount LED Fixture 4ft 18W 5500K	(L) 48" (W) 2" (H) 2"	18W	2,340 Lumen	2 x F32T8/12 (4ft. 32W ea.)
WML-4FT-30W-55K	Wall Mount LED Fixture 4ft 30W 5500K		30W	3,900 Lumen	2 x F32T8/12 (4ft. 32W ea.)
WML-4FT-36W-55K	Wall Mount LED Fixture 4ft 36W 5500K		36W	46800 Lumen	2 x F32T8/12 (4ft. 32W ea.)
WML-4FT-54W-55K	Wall Mount LED Fixture 4ft 54W 5500K		54W	7,020 Lumen	2 x F54T5HO (4ft. 54W ea.)
WML-8FT-72W-55K	Wall Mount LED Fixture 8ft 72W 5500K	(L) 96" (W) 2" (H) 2"	72W	9,360 Lumen	2 x F96T8/12 (8ft. 59-75W ea.)

- 120-277Vac ~50/60Hz • Pigtail Wire/Cable • P.F. > 0.9 • ~130 lm/W • CRI ≈ 80 •
- Select "55K" for CCT 5500K, "40K" for 4000K, "30K" for 3000K; ±10% •
- (*) Rated Life > 50,000 Hrs. (L₇₀ B₅₀) at T_[A] 25°C Max. •

Installations



Round LED Area Luminaire

Outdoor Pole/Arm-Mounted Area and Roadway Luminaire

Features & Benefits:

- Great Energy Savings !
- 5-Years | 50,000 Hours Warranty (*)
- High Power Factor – UL Listed Driver
- Bright – High CRI – High Lumen Output
- Built-in Surge Suppressors & Protection
- Distribution 60°-90°-120° or Type II,III,IV,V
- Ideal for MH, HPS & LPS Lamps Replacement



Model	Product	Size	Power	Flux	HID Equal
RLF-50W-50K-277V DLC: ALF-50W-50K-277V	Round LED Area Light 50W 5000K 277V	(H) 10"	50W	6,500 Lumen	175W MH
RLF-70W-50K-277V DLC: ALF-70W-50K-277V	Round LED Area Light 70W 5000K 277V	(Ø)	70W	9,500 Lumen	250W MH
RLF-100W-50K-277V DLC: ALF-100W-50K-277V	Round LED Area Light 100W 5000K 277V	22"	100W	12,500 Lumen	400W MH

- "277V" 120-277Vac ~50/60Hz • P.F. > 0.9 • THD < 20% • Pigtail Wire/Cable •
- Color Temp. (CCT) 30K, 40K, 50K, 57K • 130 Lumen per Watt • CRI ≈ 70 •
- Mark "SFT" for Slip Fitter Top Mount, "SFS" for Slip Fitter Side Mount •
- CCT 30K=3000K, 40K=4000K, 50K=5000K, 57K=5700K ±10% •
- (*) Rated Life 50,000 Hrs. (L₇₀ B₅₀) at T_[A] 25°C Max. •

Installations



Solar LED Street Light

Eco Integrated Solar LED Street Light

Independently Light up dark areas without electricity !

Small and Lightweight with Built in Motion Sensor and Photocell

- Dusk to Dawn Sensor • Beam angle: 150° x 70° • Long Life Lithium-ion Battery • IP65 • Programable, Integrated Motion Sensor •
- High efficiency Monocrystalline Solar Panel • 50,000 Hours Lifetime •



Model	Product	Size	Power	Flux	HID Equal
SLSL-10W12A-55K-MS	Solar LED Street Light 10W 12A 55K Motion + Photo Sensor	(L) 20" (W) 9¼" (H) 3½"	Solar: 10W Battery: 3.7Vx12AH	1,300 Lm (in Full Power)	100W MH, HPS
SLSL-20W24A-55K-MS	Solar LED Street Light 20W 24A 55K Motion + Photo Sensor	(L) 25¼" (W) 11¾" (H) 3½"	Solar: 20W Battery: 3.7Vx24AH	2,600 Lm (in Full Power)	100W MH, HPS
SLSL-40W30A-55K-MS	Solar LED Street Light 40W 30A 55K Motion + Photo Sensor	(L) 30¼" (W) 14½" (H) 4¼"	Solar: 40W Battery: 7.4Vx30AH	6,000 Lm (in Full Power)	175W ~ 250W MH, HPS
SLSL-50W48A-55K-MS	Solar LED Street Light 50W 48A 55K Motion + Photo Sensor	(L) 38" (W) 20" (H) 5"	Solar: 60W Battery: 12.8V x 30AH	8,000 Lm (in Full Power)	175W ~ 250W MH, HPS
SLSL-60W36A-55K-MS	Solar LED Street Light (All- in-One) 60W 36A 55K Motion + Photo Sensor	(L) 38" (W) 20" (H) 5"	Solar: 70W Battery: 12.8V x 36AH	9,000 Lm (in Full Power)	320W MH, HPS



OLYMPIA LIGHTING, INC.

148 Veterans Dr.

Northvale, NJ 07647, USA

Tollfree: +1 (866) 738 0008

Tel.: +1 (201) 812 7880 • Fax: +1 (201) 367 3858

www.OlympiaLighting.com • info@OlympiaLighting.com

OLYMPIA® is a registered trademark of Olympia Lighting, Inc.

OLYMPIA LIGHTING